

TOYOTA A245E/246E

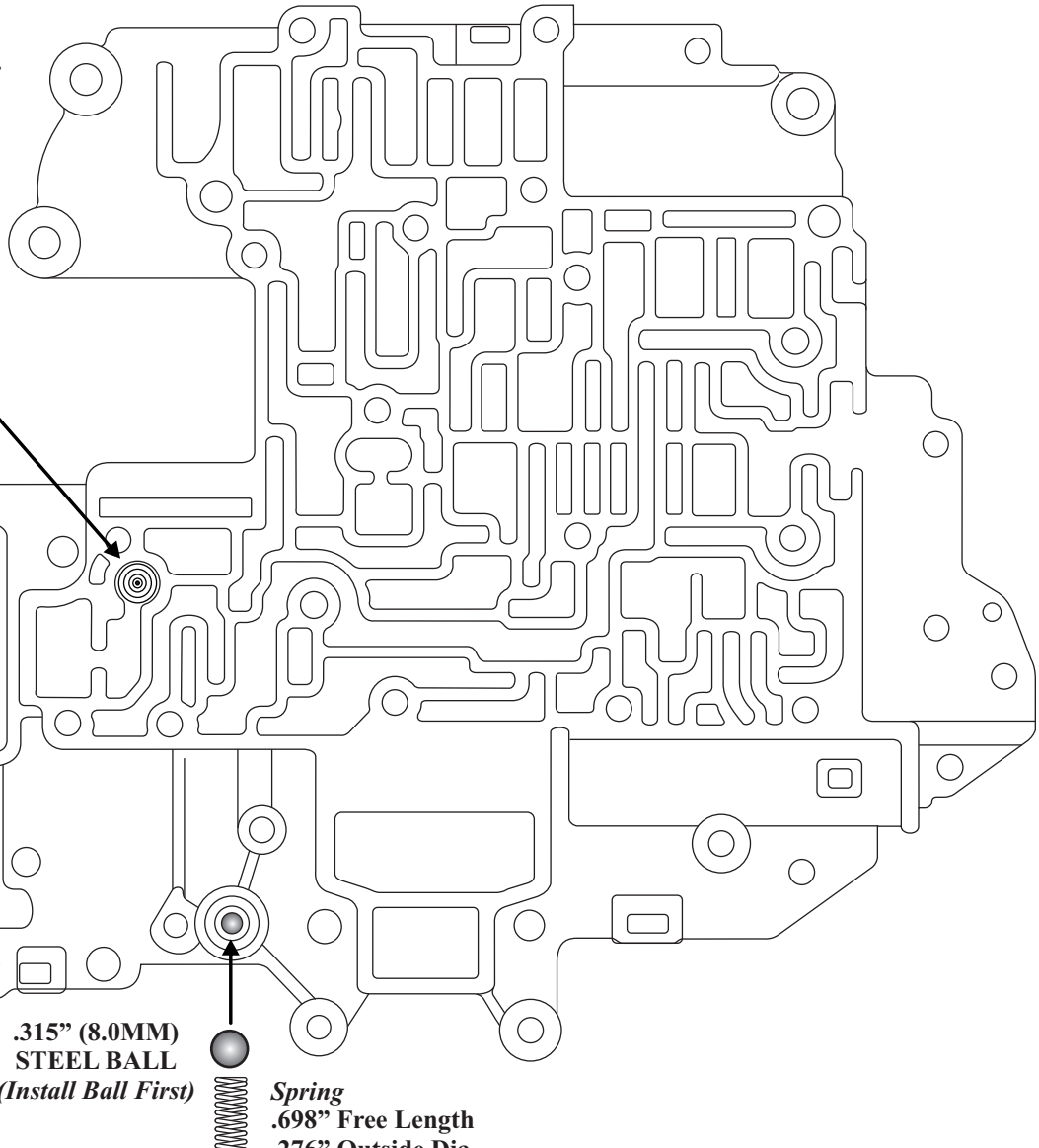
LOWER VALVE BODY (Bottom Side)

(Early With TV Cable)

Spring
.969" Free Length
.315" Outside Dia.
.032" Coil Dia.



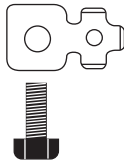
**COOLER BYPASS
VALVE**
(Install As Shown)



.315" (8.0MM)
STEEL BALL
(Install Ball First)



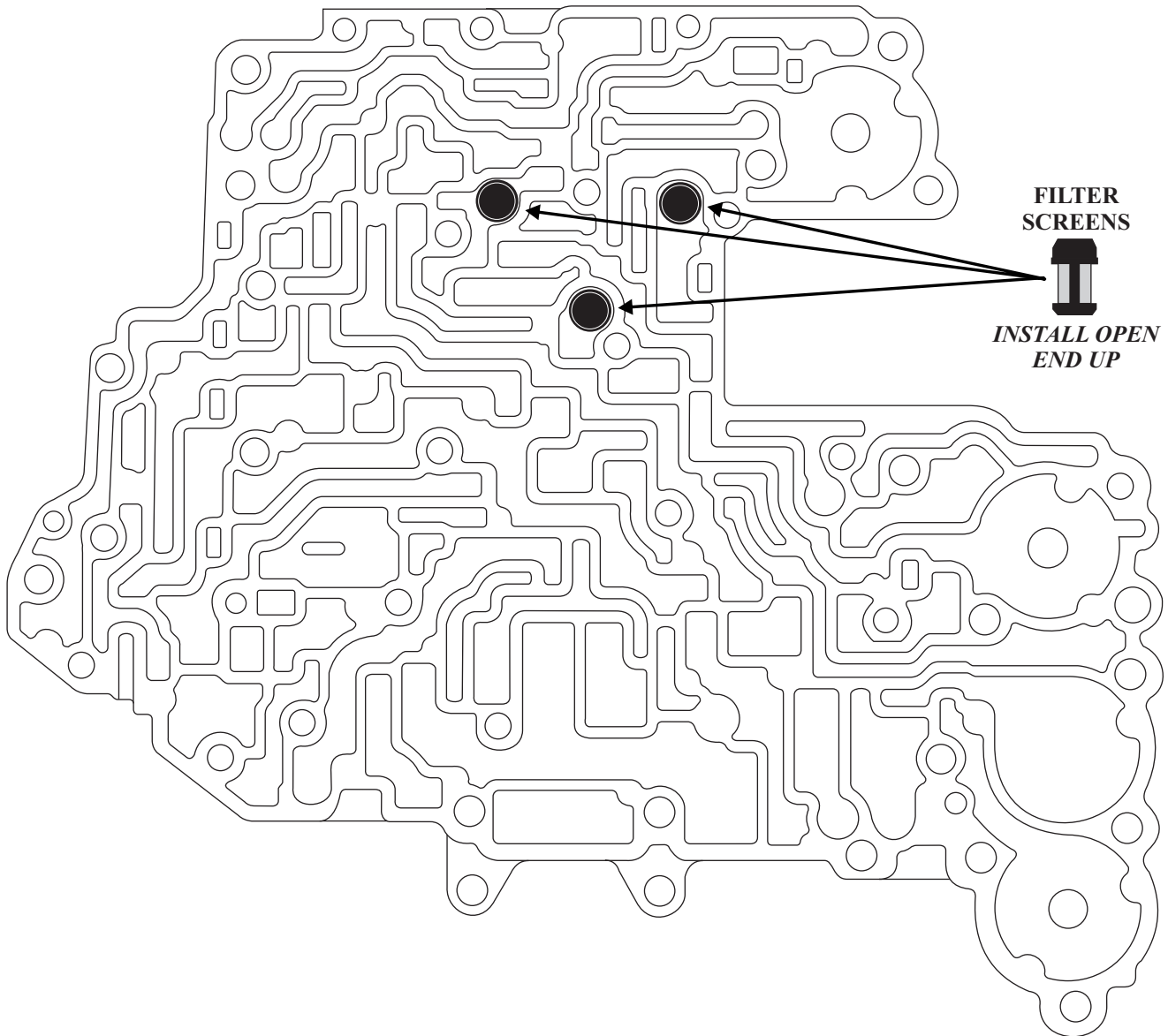
Spring
.698" Free Length
.276" Outside Dia.
.040" Coil Dia.



TOYOTA A245E/246E

LOWER VALVE BODY (Top Side)

(Early With TV Cable)

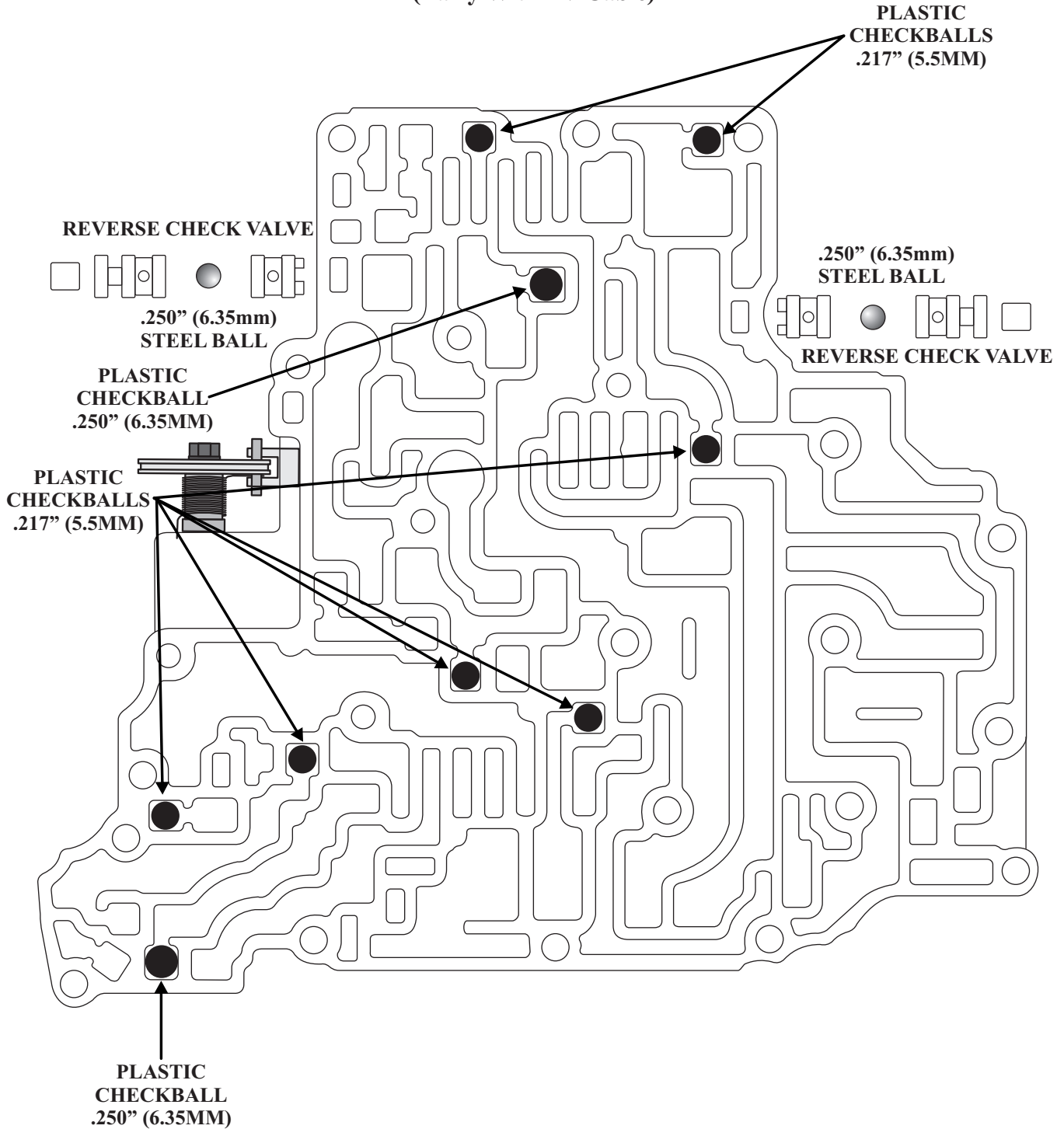


Copyright © 2008 ATSG

TOYOTA A245E/246E

UPPER VALVE BODY (Front Side)

(Early With TV Cable)

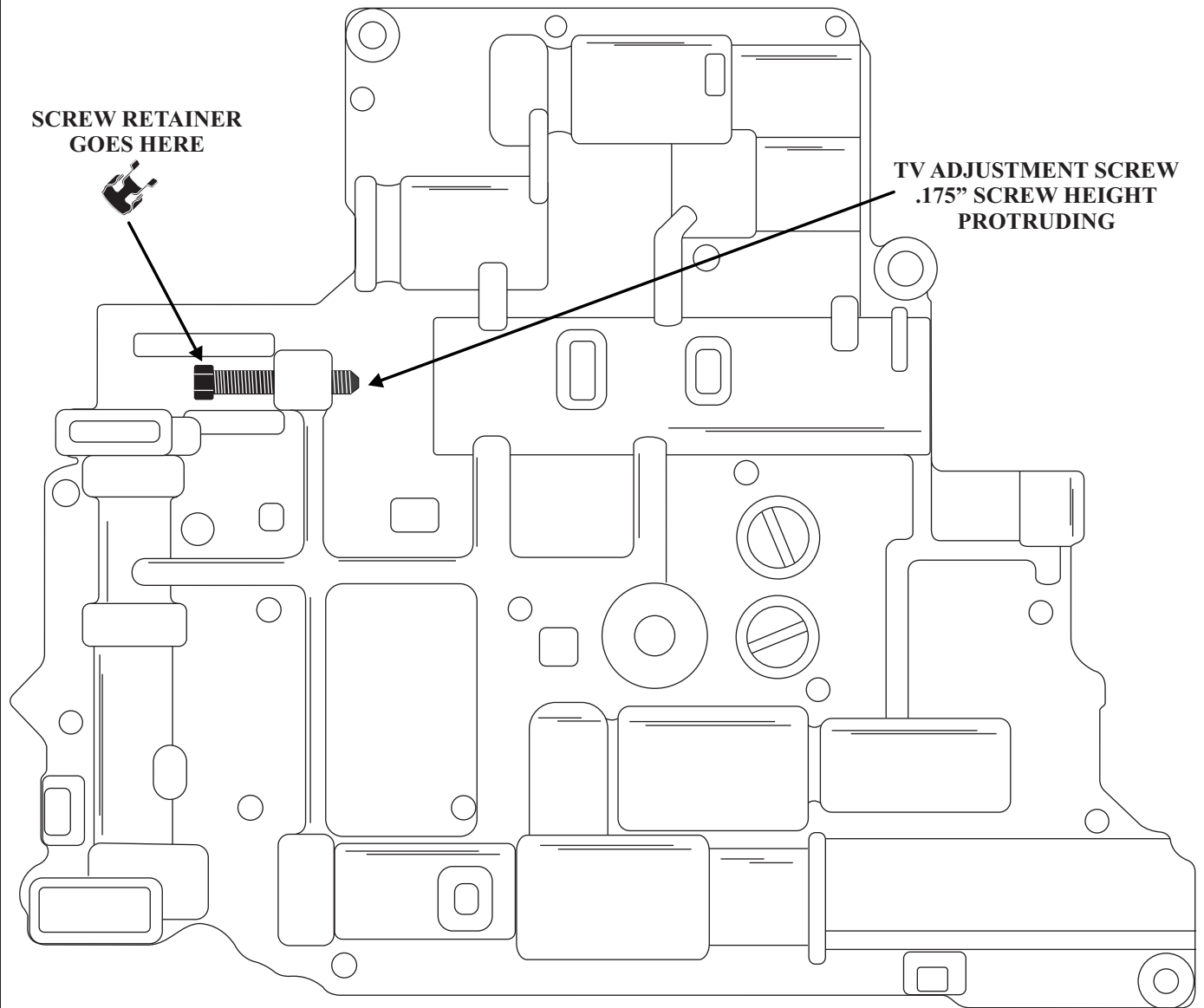


Copyright © 2008 ATSG

TOYOTA A245E/246E

UPPER VALVE BODY (Back Side)

(Early With TV Cable)



Copyright © 2008 ATSG

TOYOTA A245E/246E

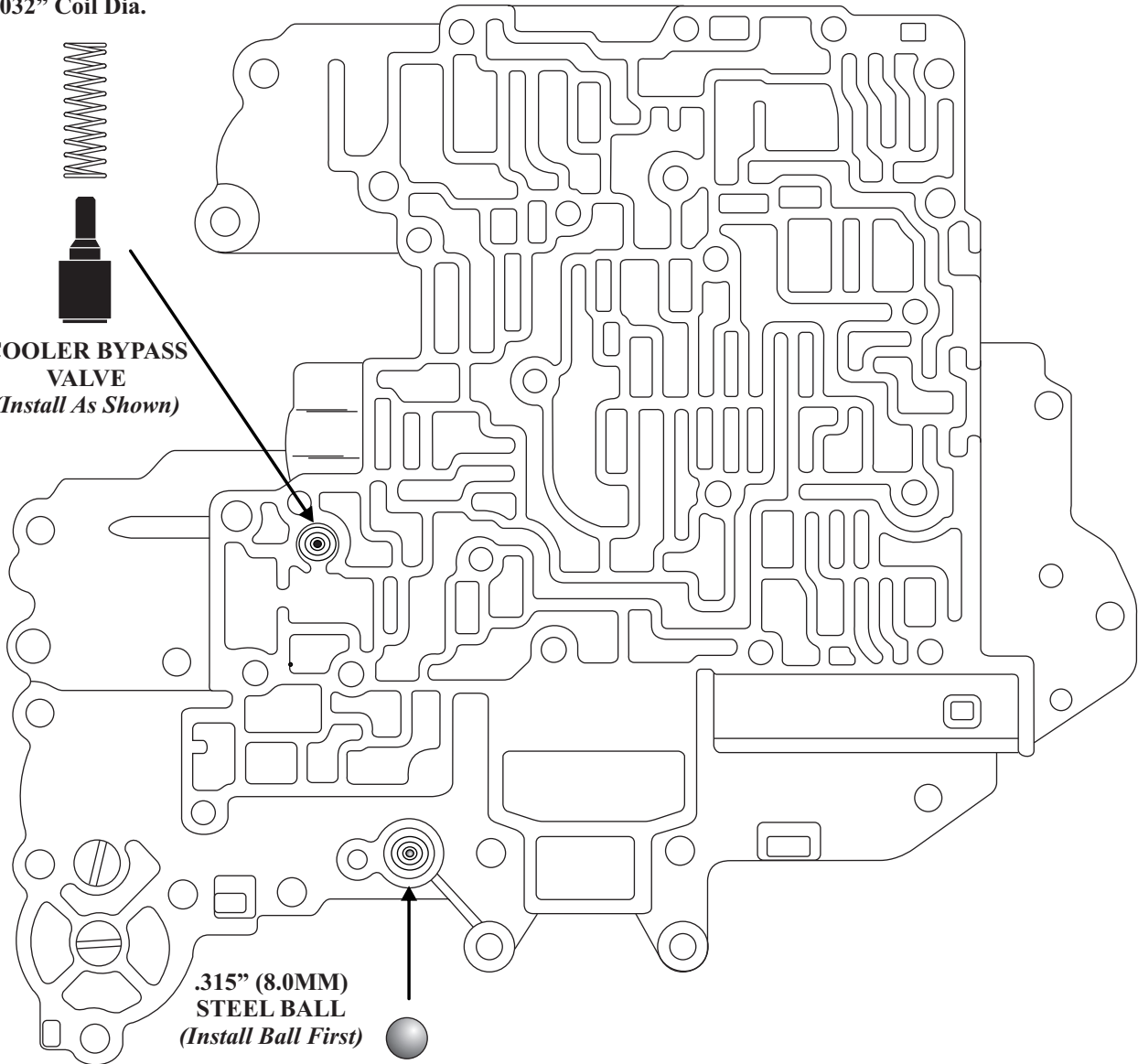
LOWER VALVE BODY (Bottom Side)

(Late With TV Cable)

Spring
.969" Free Length
.315" Outside Dia.
.032" Coil Dia.



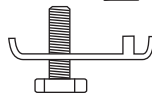
**COOLER BYPASS
VALVE**
(Install As Shown)



**.315" (8.0MM)
STEEL BALL**
(Install Ball First)



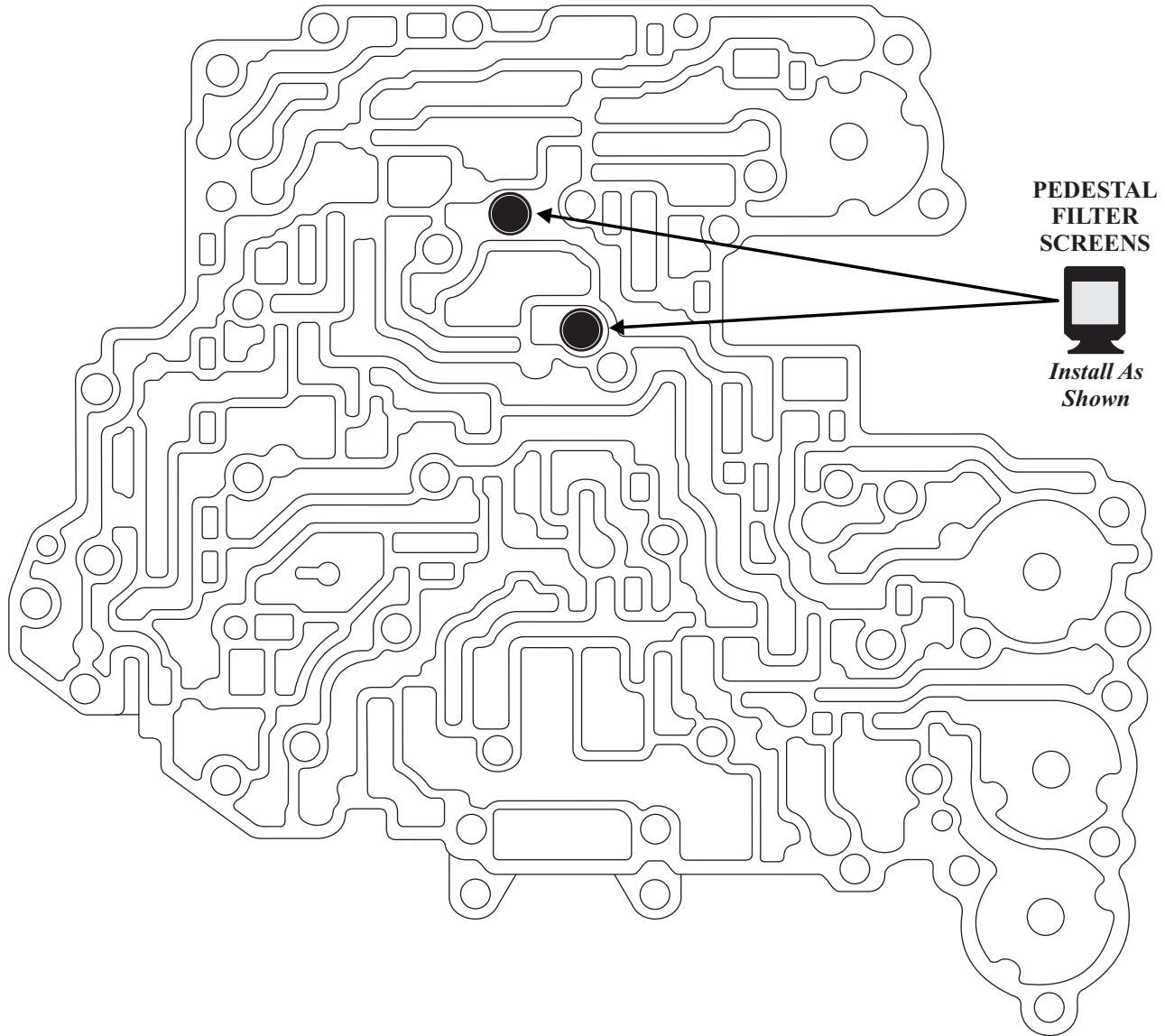
Spring
.698" Free Length
.276" Outside Dia.
.040" Coil Dia.



TOYOTA A245E/246E

LOWER VALVE BODY (Top Side)

(Late With TV Cable)

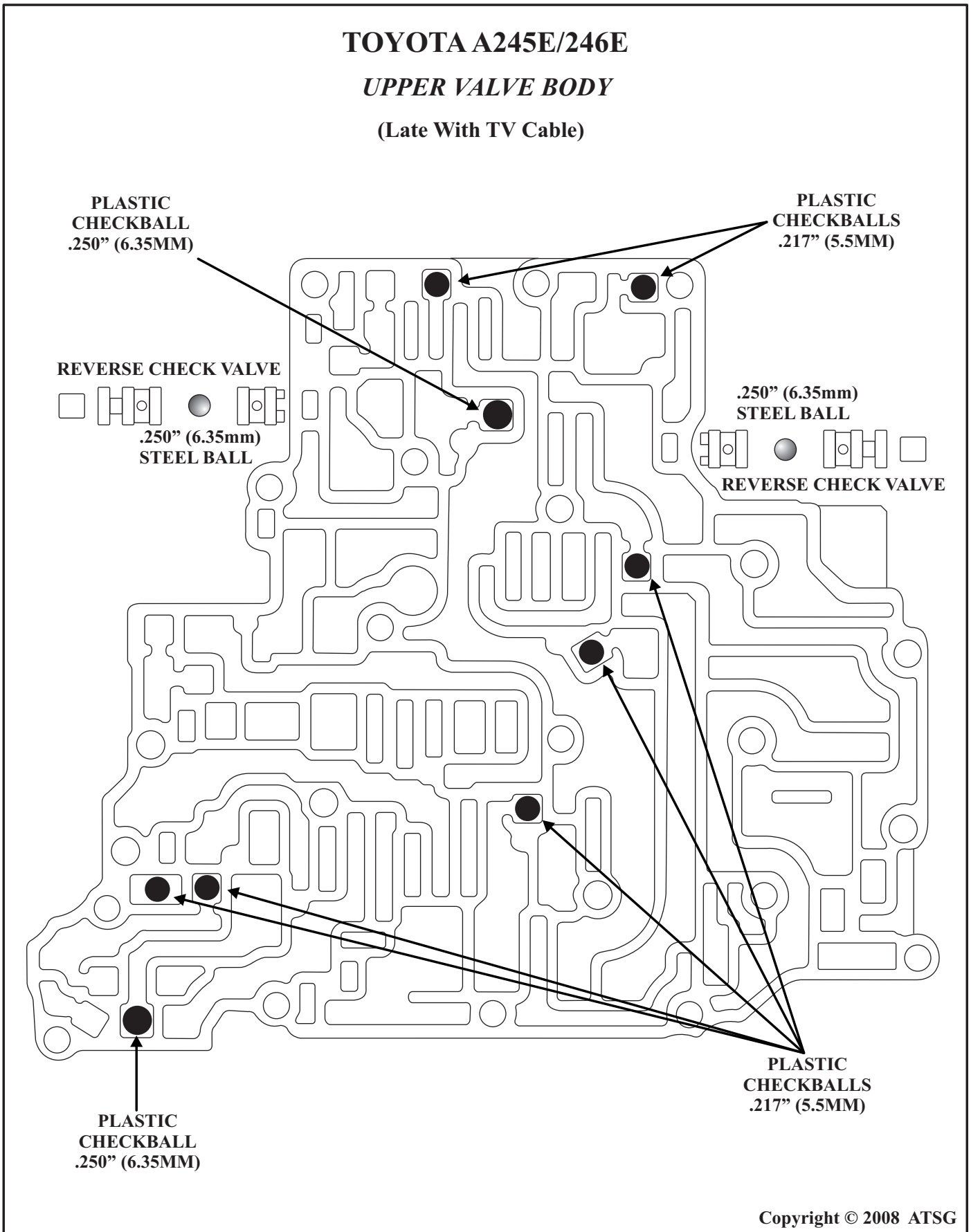


Copyright © 2008 ATSG

TOYOTA A245E/246E

UPPER VALVE BODY

(Late With TV Cable)



PLASTIC
CHECKBALL
.250" (6.35MM)

PLASTIC
CHECKBALLS
.217" (5.5MM)

REVERSE CHECK VALVE
REVERSE CHECK VALVE
.250" (6.35mm)
STEEL BALL

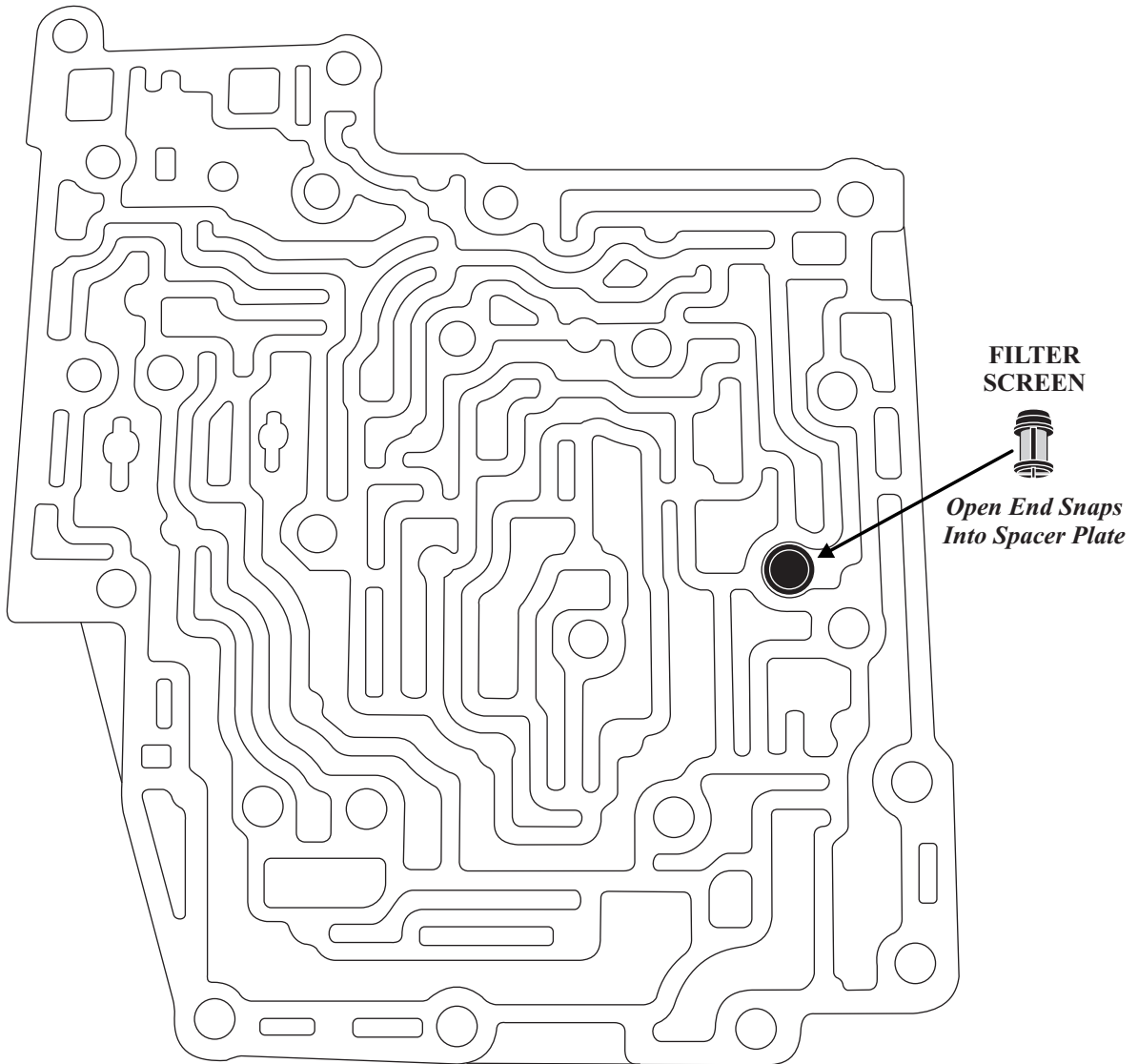
.250" (6.35mm)
STEEL BALL
REVERSE CHECK VALVE

PLASTIC
CHECKBALL
.250" (6.35MM)

PLASTIC
CHECKBALLS
.217" (5.5MM)

Copyright © 2008 ATSG

TOYOTA A245E/246E
LOWER VALVE BODY COVER
(Late With TV Cable)

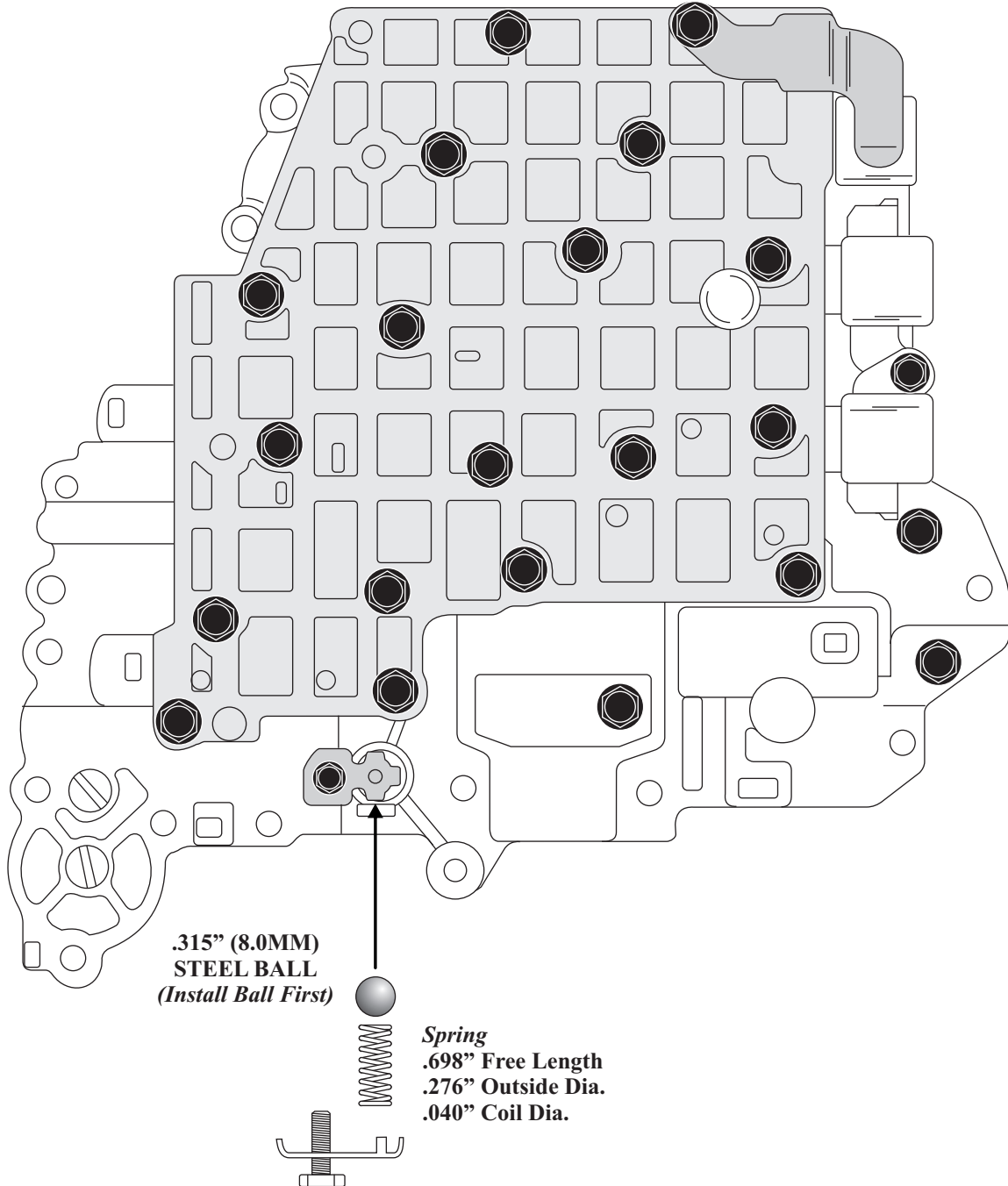


Copyright © 2008 ATSG

TOYOTA A245E/246E

LOWER VALVE BODY (Bottom Side)

(With Line Pressure Solenoid)

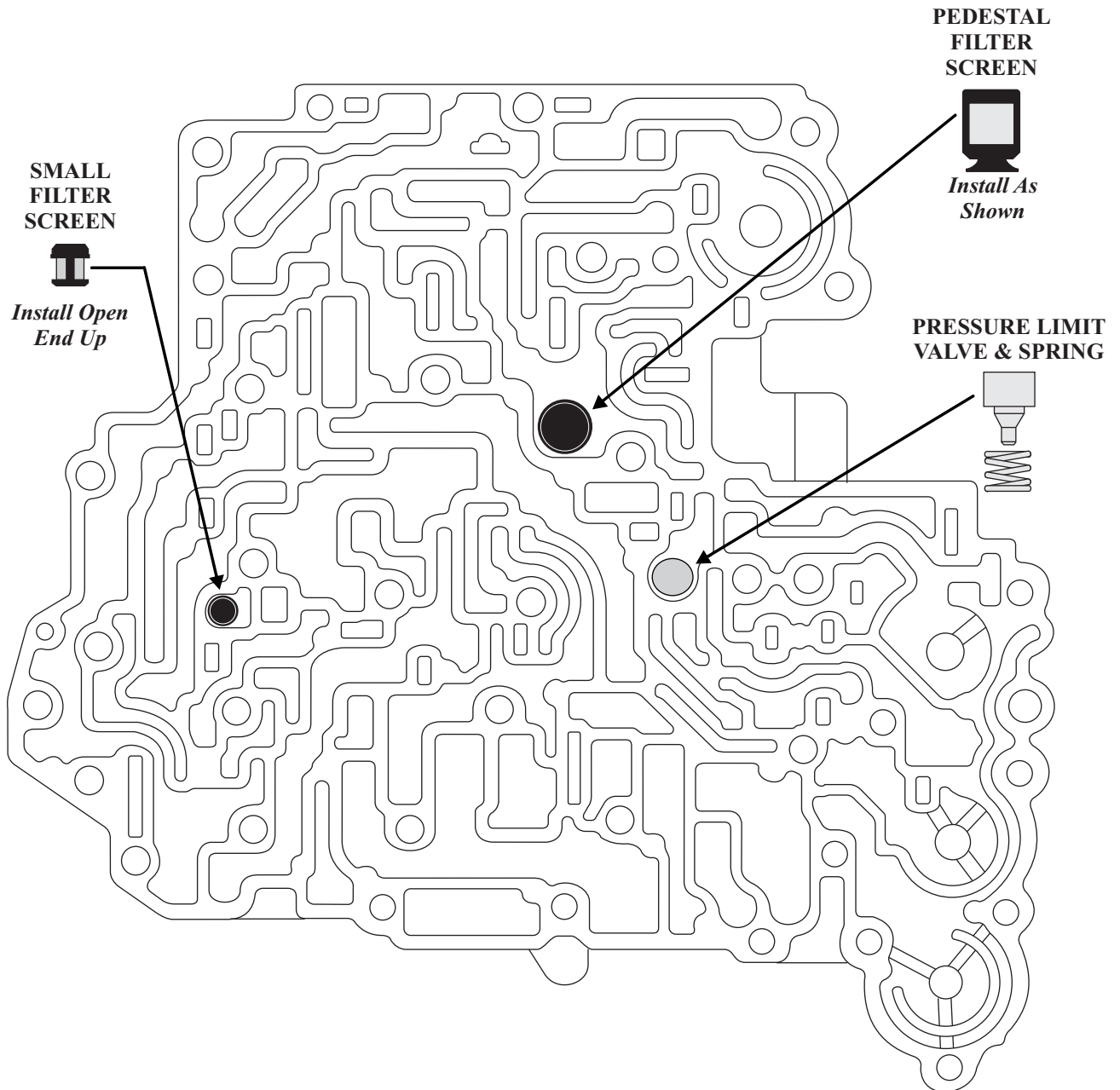


Copyright © 2008 ATSG

TOYOTA A245E/246E

LOWER VALVE BODY (Top Side)

(With Line Pressure Solenoid)

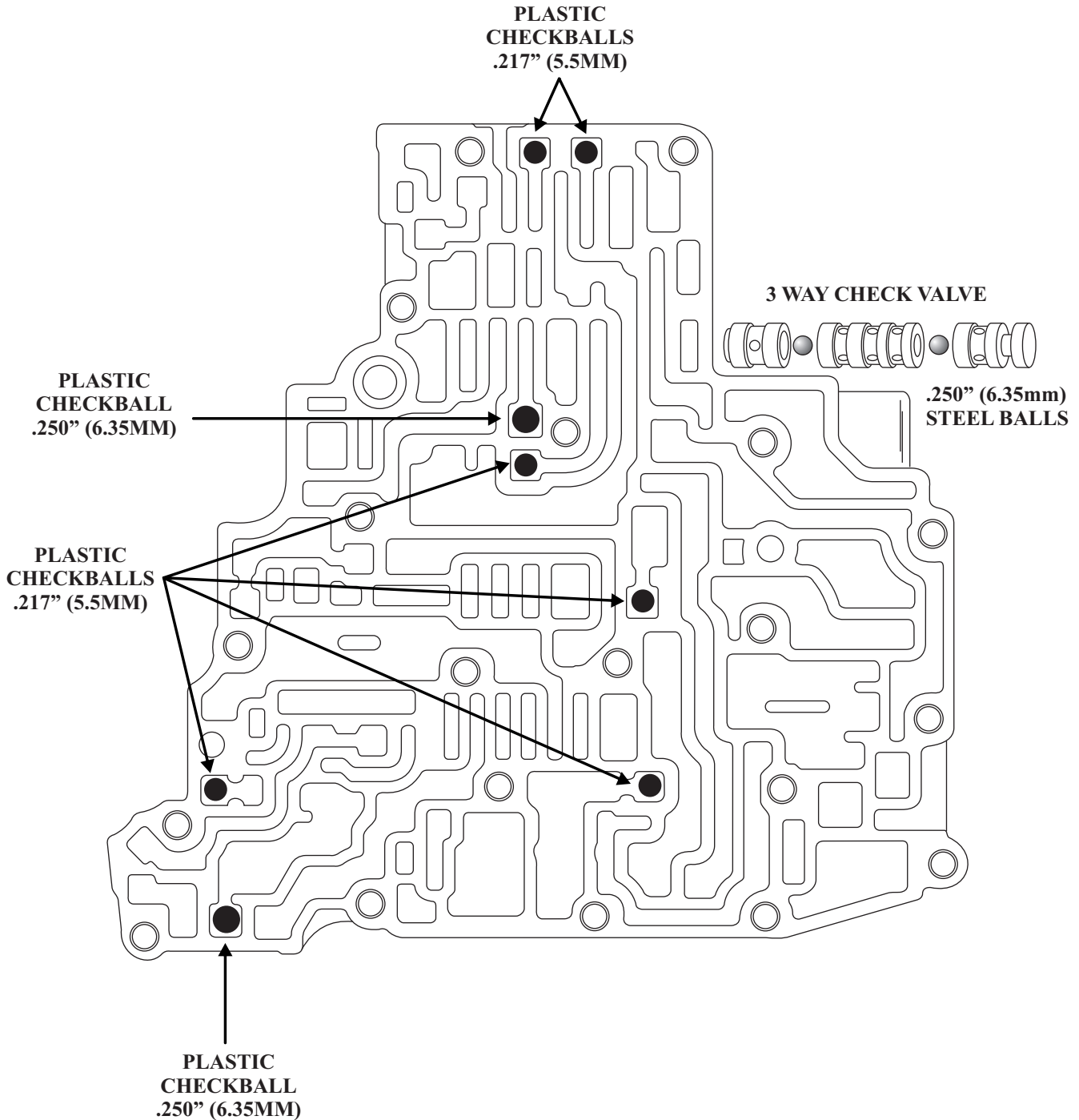


Copyright © 2008 ATSG

TOYOTA A245E/246E

UPPER VALVE BODY

(With Line Pressure Solenoid)



Copyright © 2008 ATSG